

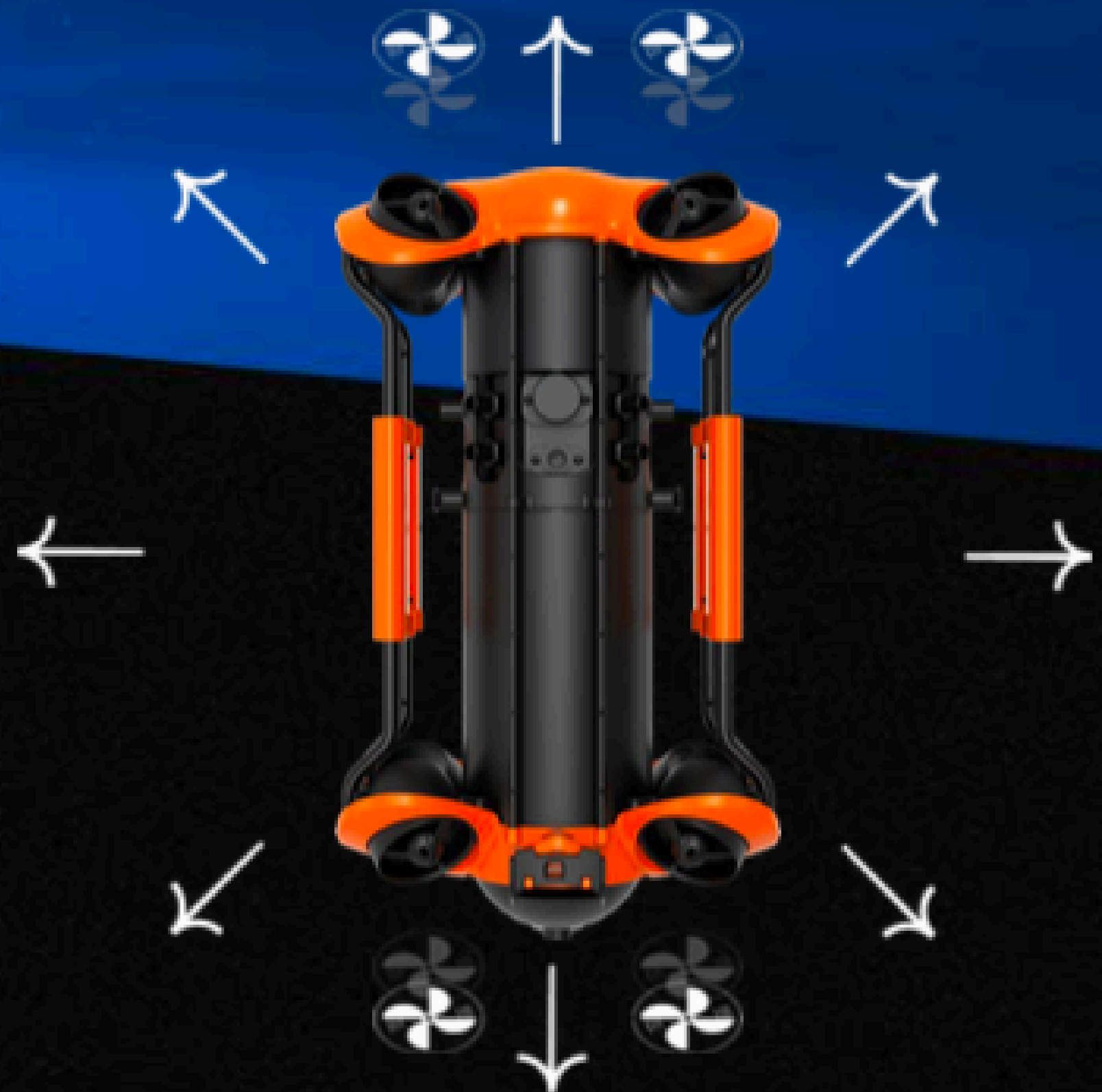
NETA HULL



Stronger power, 4 Knots speed

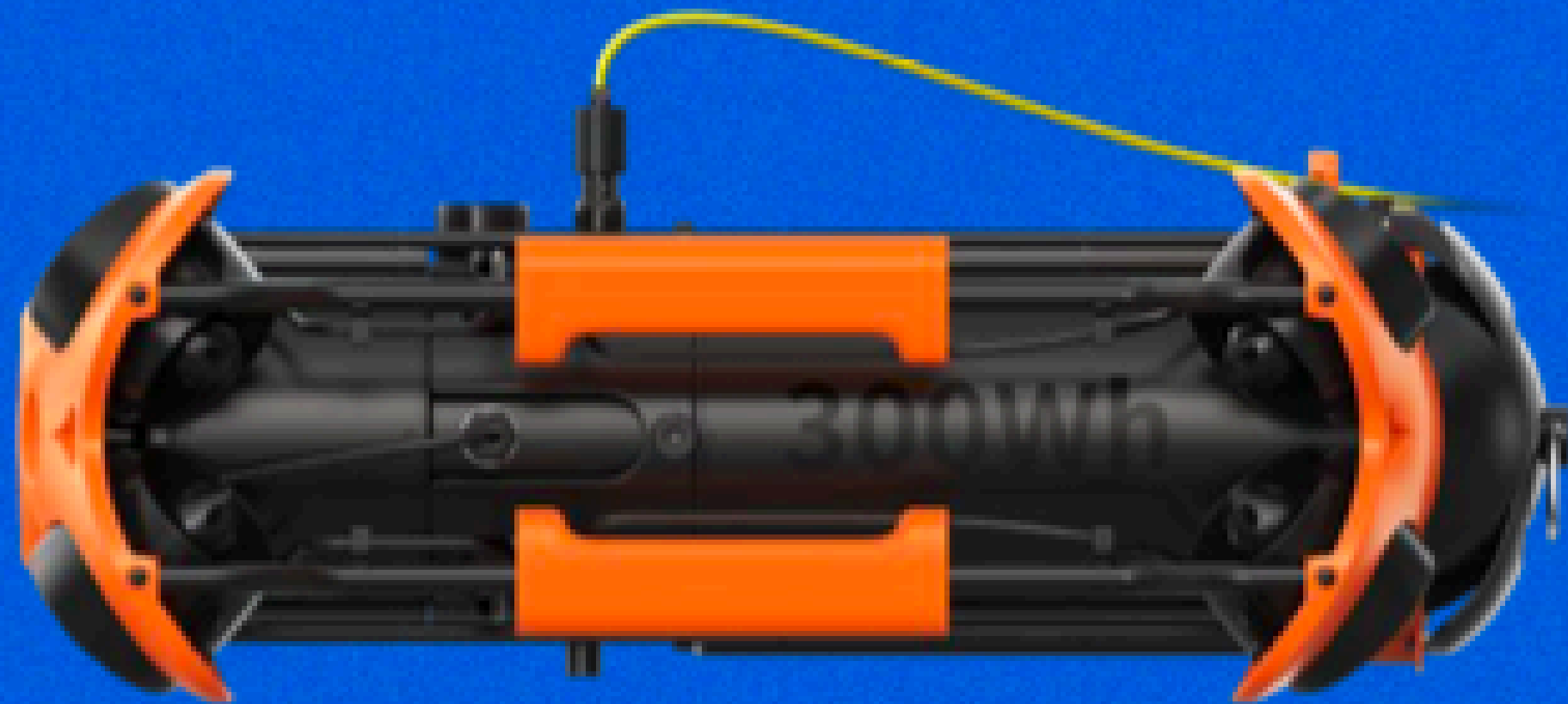
→ 8 Vectored-Thrusters Layout, Anti-Stuck Motor.

→ Single motor power 150W, allows OMNI movement in all directions with 4 Knots speed(2m/s).



700Wh battery, 5 hours battery life

The default 300Wh lithium battery , Optional 700Wh Replaceable Battery(support Hybrid power supply) will make your operation time unlimited.



  Optional

Unlimited battery life with AC power supply

Support AC power supply (optional), to achieve truly unlimited battery life.



USBL underwater positioning, Multibeam sonar and **more accessories**

Control Console (High-brightness Screen), Docking station, USBL underwater positioning, 700Wh battery, Multibeam sonar, Auxiliary Camera and other M2 Pro Exclusive Enhanced Accessories

Multibeam sonar



Support model:
Blueprint
Oculus/M370S/M750D/M1200D
More models are expanding...

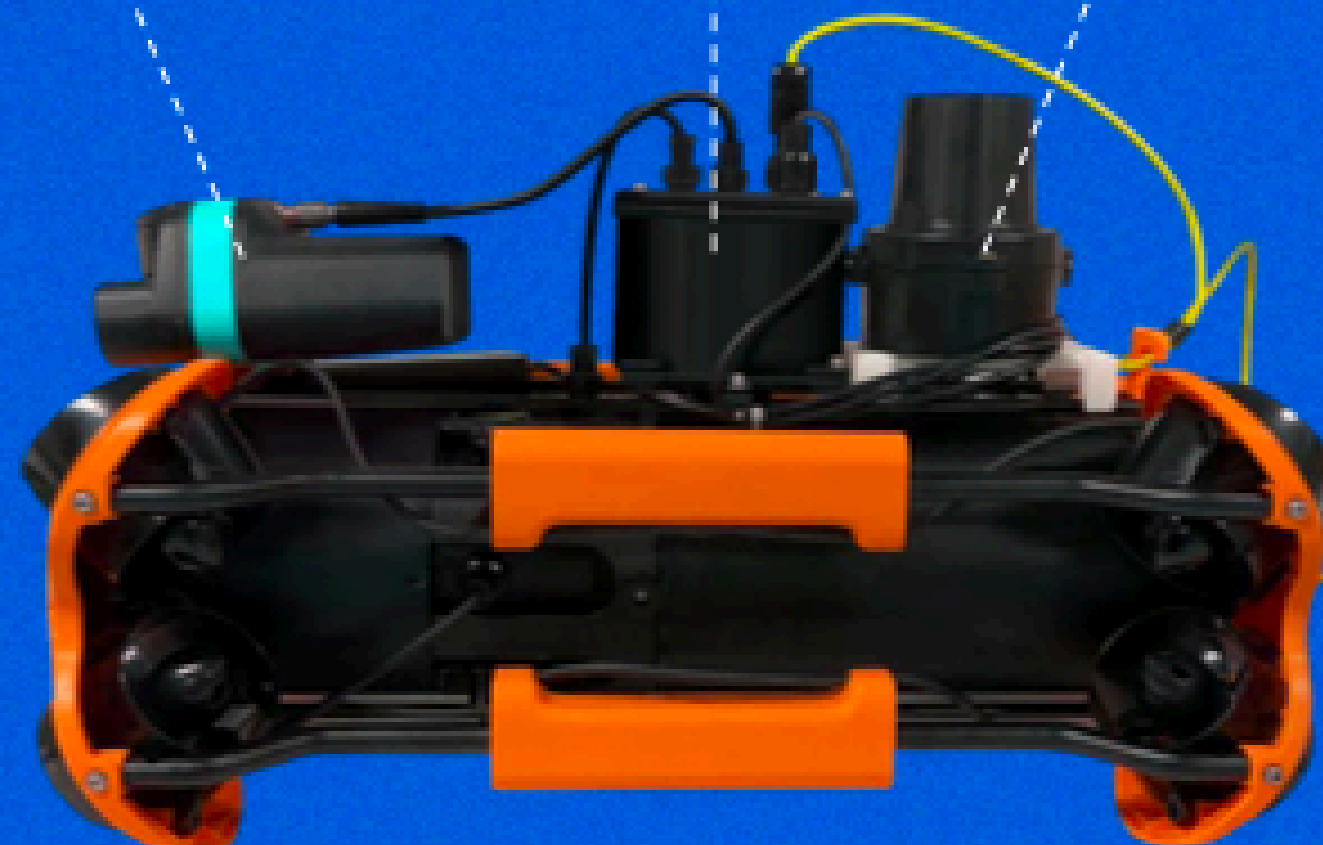
Docking station



USBL underwater positioning

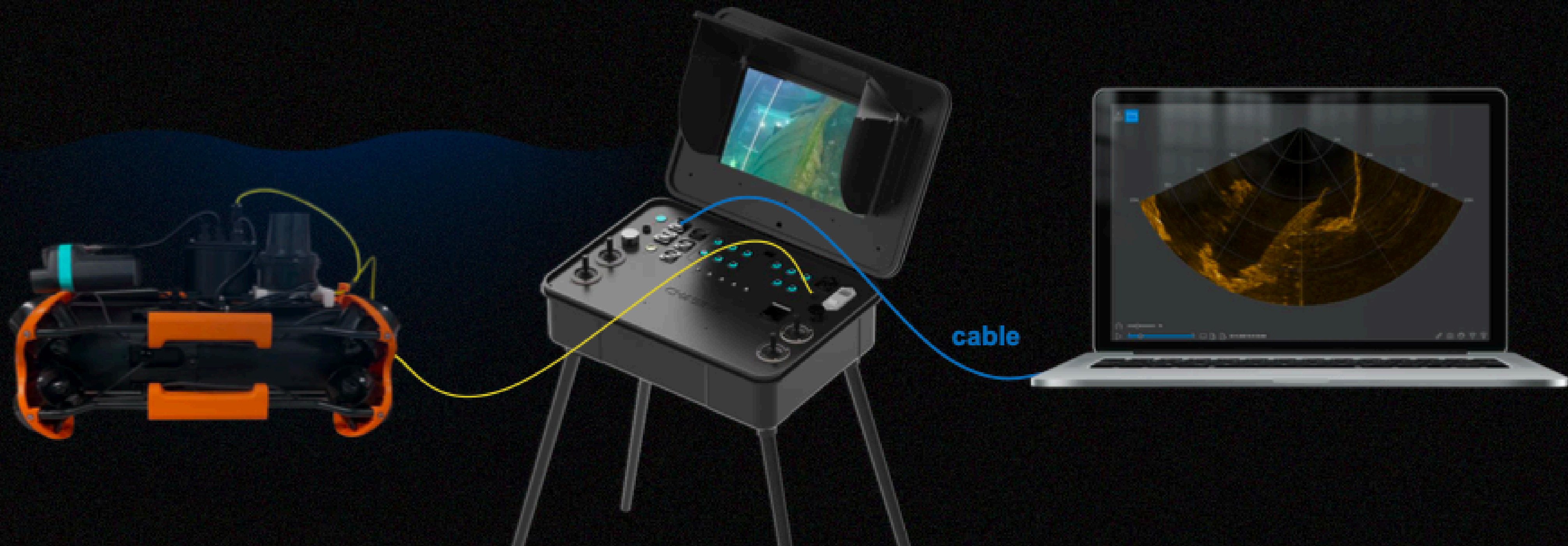


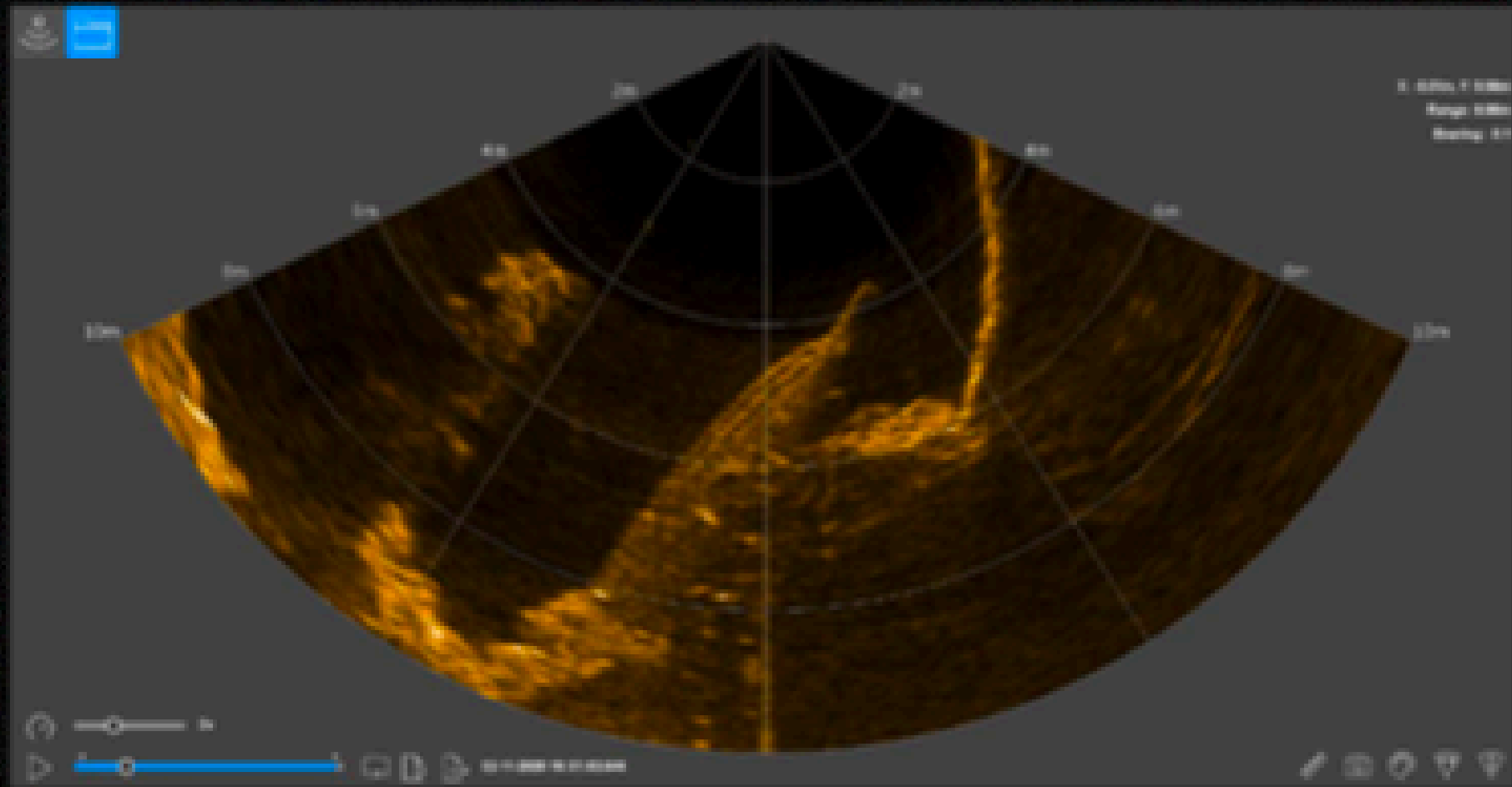
Support model:
Cerulean usbl sonar
More models are expanding...



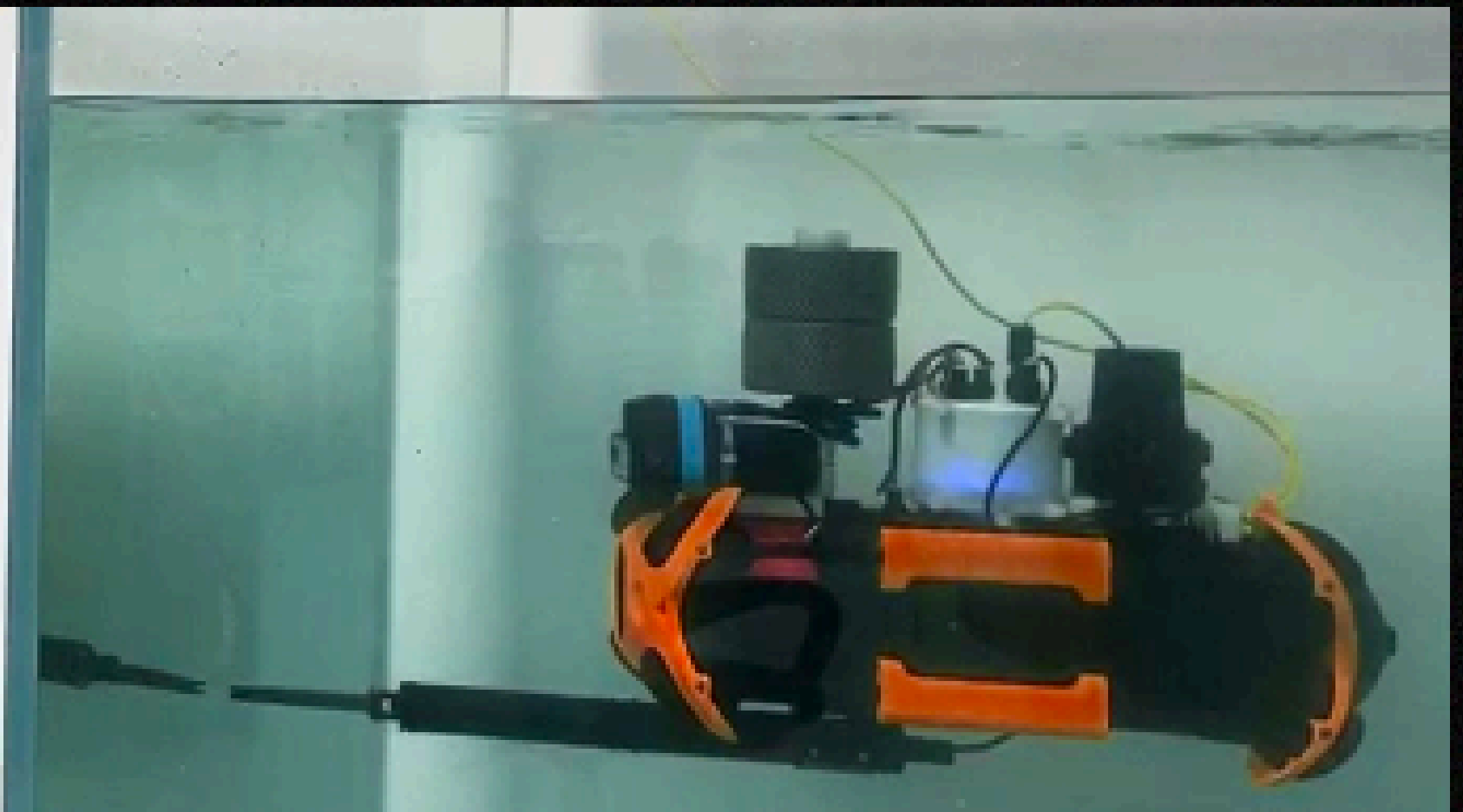
USBL underwater positioning, Multibeam sonar and **more accessories**

 Multibeam sonar



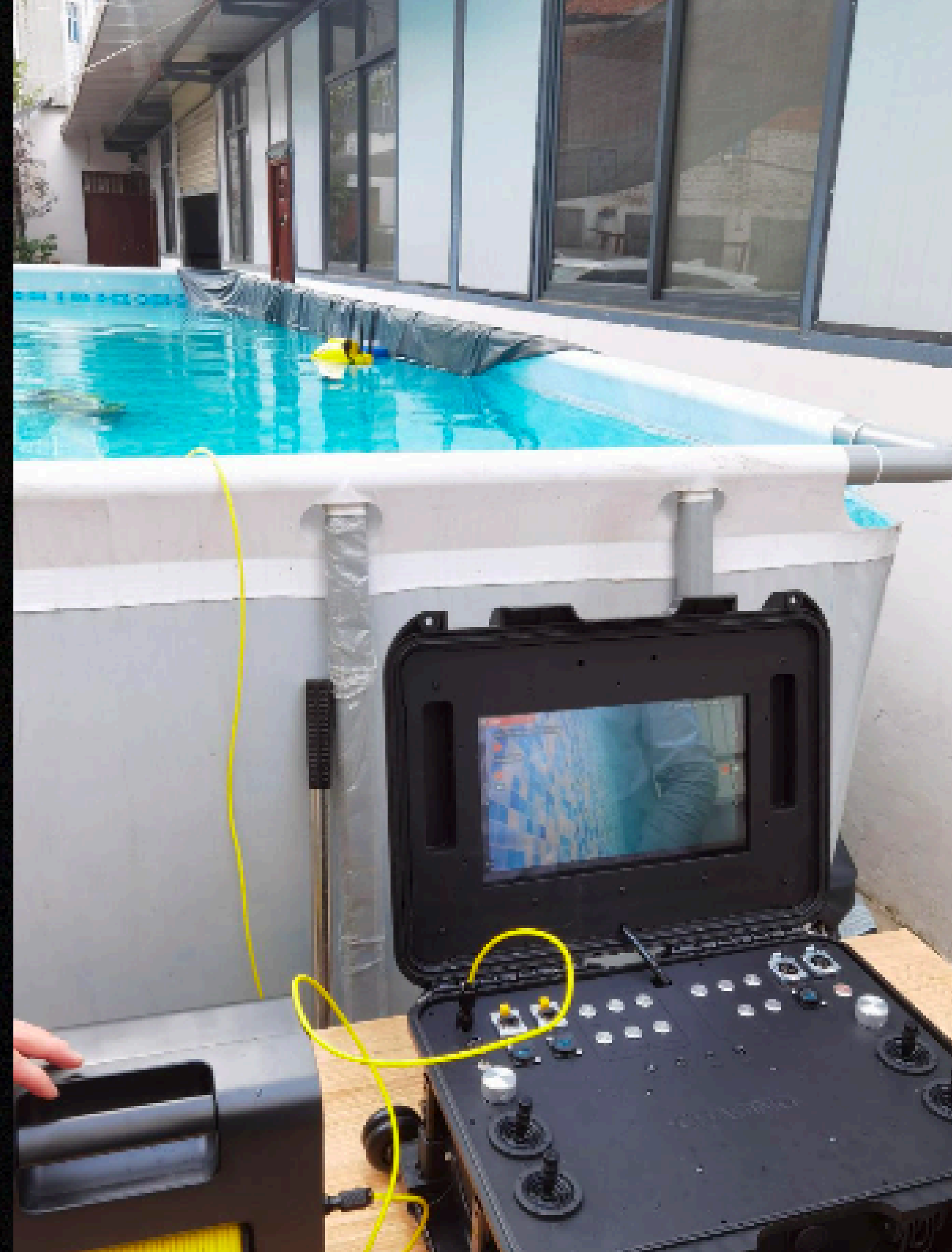
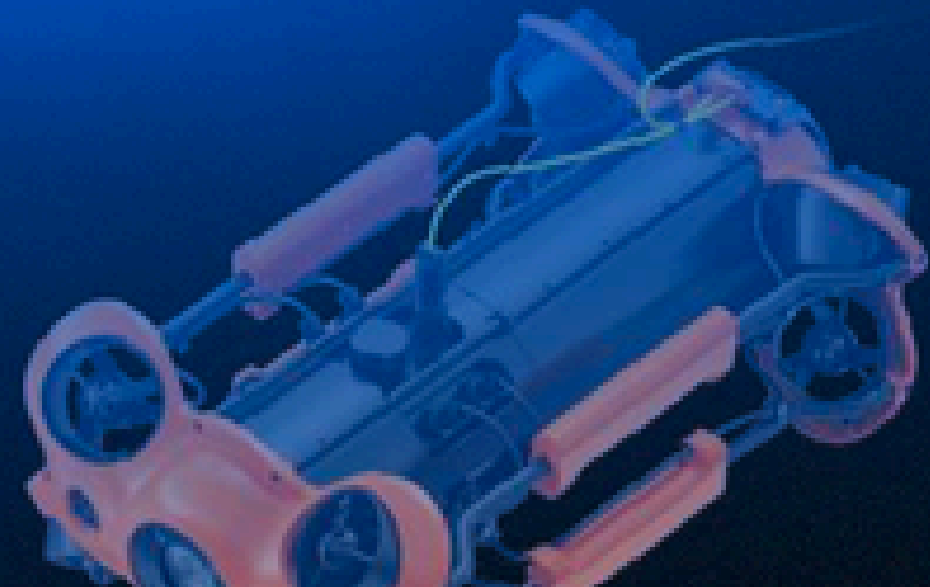


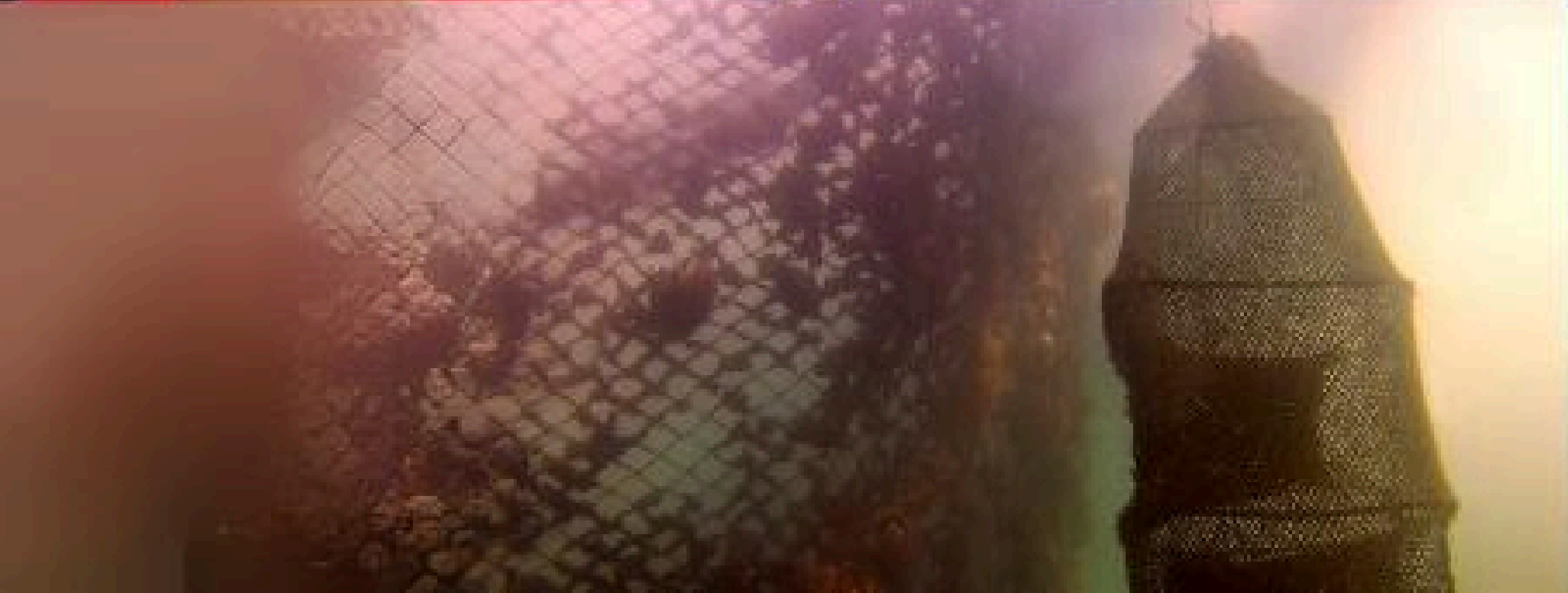
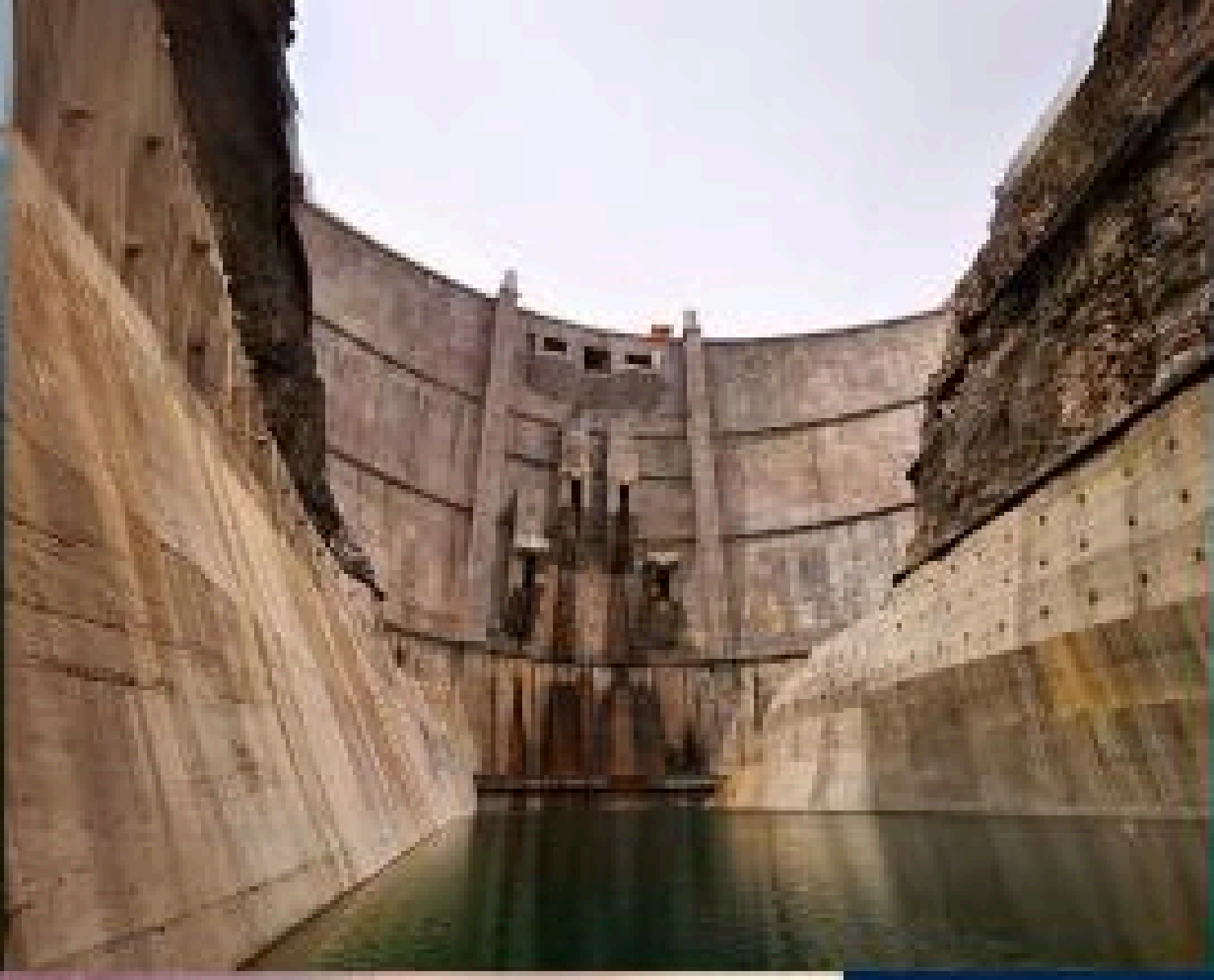
Multibeam sonar — test



Control Console, be visible in sunlight

Size	484×375×178mm
Weight	≈ 8 Kg
Display	1920 x 1080, 1000cd/m2
Operating temperature	-10°C ~ 45°C
Power supply	21.6 V
Interface	RJ45*2, USB 2.0*2, QC3.0 USB*1, AC Input*1, AC output to ROV*1





4K+EIS Image Stabilization, F1.8 Aperture

M2 Pro offers 4K and 1080p video and 12 megapixel photos. Equipped with 1/2.3 SONY CMOS, EIS anti video-shake feature, with 4000 lumen LED lights to capture underwater details.



Parameters

ROV	SIZE	480*267*165mm	Camera	CMOS	1/2.3
	WEIGHT	≈5.7KG		LENS	F1.8
	MAX DEPTH	490ft		FOCUS	1m
	MAX SPEED	2 m/s (4 Kn)		ISO RANGE	100-6400
	RUNTIME	Up to 4H		FOV	152
	BATTERY	300Wh		MAX RESOLUTION	12 Meg Pixel
	Operating Temperature	-10°C~45°C		FORMAT	JPEG/DNG
Remote Controller	SIZE	160*155*125mm		VIDEO	UHD:3840*2160 (4K) 30fps FHD:1920*1080 (1080p) 30/60/120fps
	WEIGHT	685g		SLOW MOTION	720p: 8x (240fps) 1080p: 4x (120fps)
	BATTERY	2500mAh		TIME LAPSE	4K/1080p supported
	RUNTIME	≥6H (depending on the environment)		VIDEO STREAM	60M
	WIRELESS	Wi-Fi supported		VIDEO FORMAT	MP4
	HDMI	Support		SD Card	128G
	HANDLE SPRING	Maximum support 13 inch			
CHARGER	POWER	2.9A/25.2V	SENSOR	IMU	3 axis gyro
	ROV CHARGING TIME	4.5H			accelerometer
	RC CHARGING TIME	2H			compass
LED	BRIGHTNESS	2*2000 Lumens		DEPTH SENSOR	< ±0.25m
	COLOR TEMPERATURE	5000K~5500K	TEMPERATURE SENSOR	< ±2°C	
	CRI	85			
	DIMMING	THREE GEARS			